

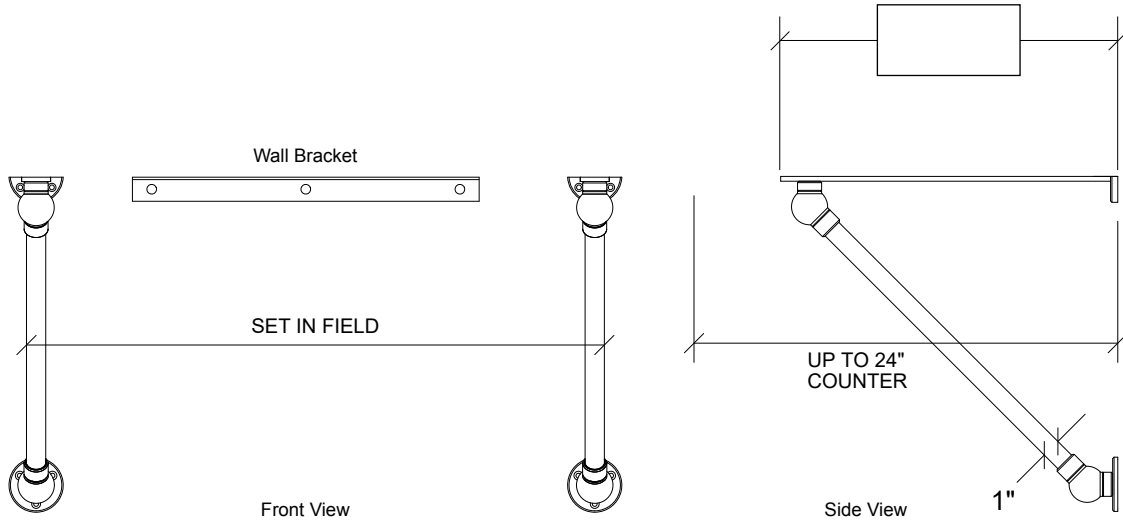
Signature



WALL MOUNT SYSTEM ASSEMBLY

1.0" DIAMETER TUBING

Models:
WMSG

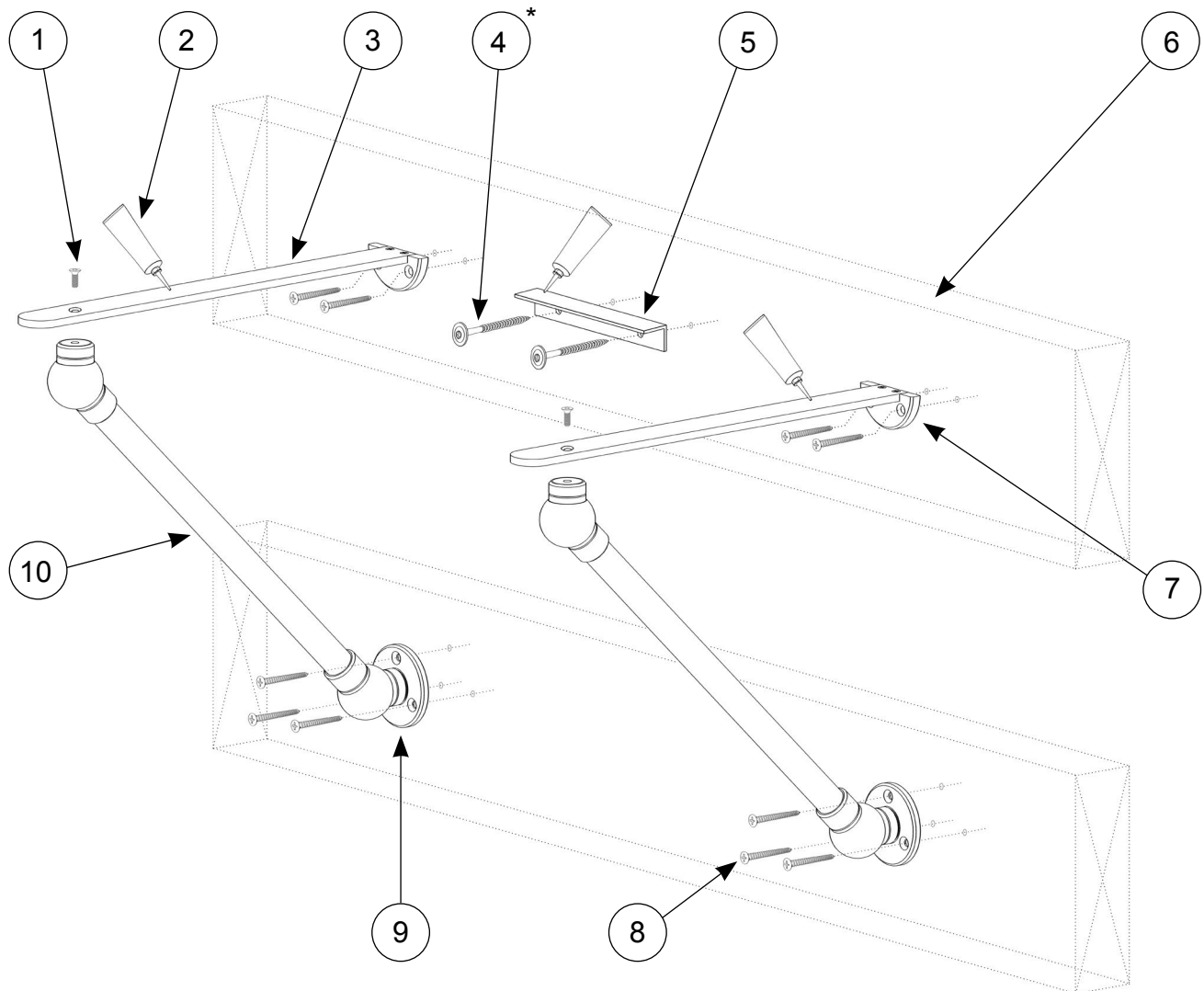


Order #:

Finish:

Inspector:

**ALL PALMER WALL MOUNT SYSTEMS REQUIRE
 SOLID WOOD BLOCKING IN THE WALL**



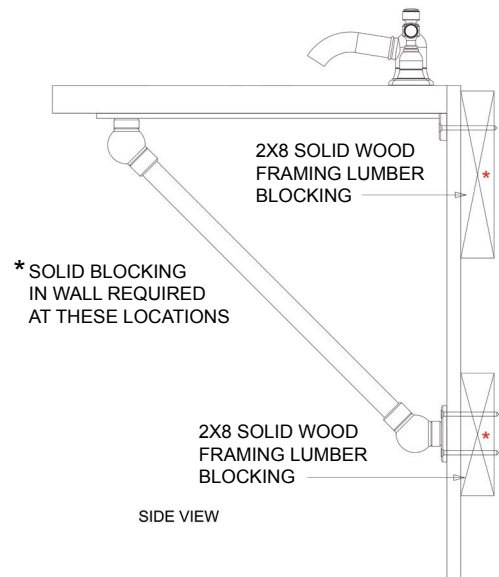
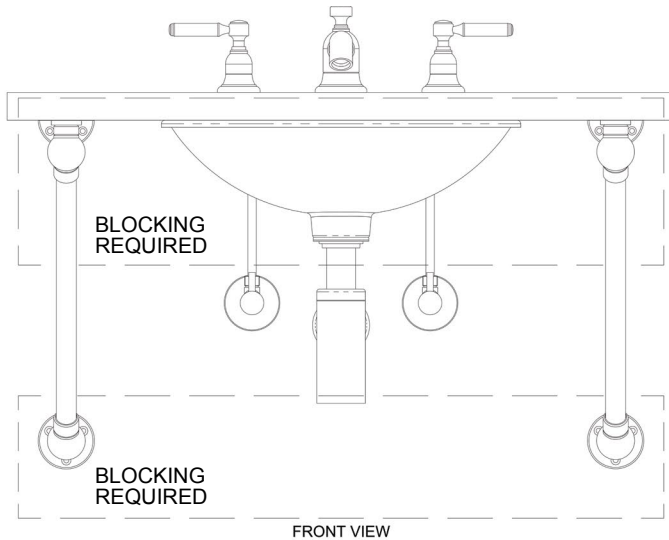
ALL PALMER WALL MOUNT SYSTEMS REQUIRE SOLID WOOD BLOCKING IN THE WALL

- | | |
|-----------------------------------|--------------------------------|
| 1. Machine Screw | 6. Solid Wood In-Wall Blocking |
| 2. Silicone Adhesive | 7. Wall Flange |
| 3. Wall Return | 8. Structural Screws |
| 4. SPAX 1/4" x 3" PowerLag Screws | 9. Exposed Screw Wall Flange |
| 5. Wall Bracket | 10. Signature Arm Assembly |

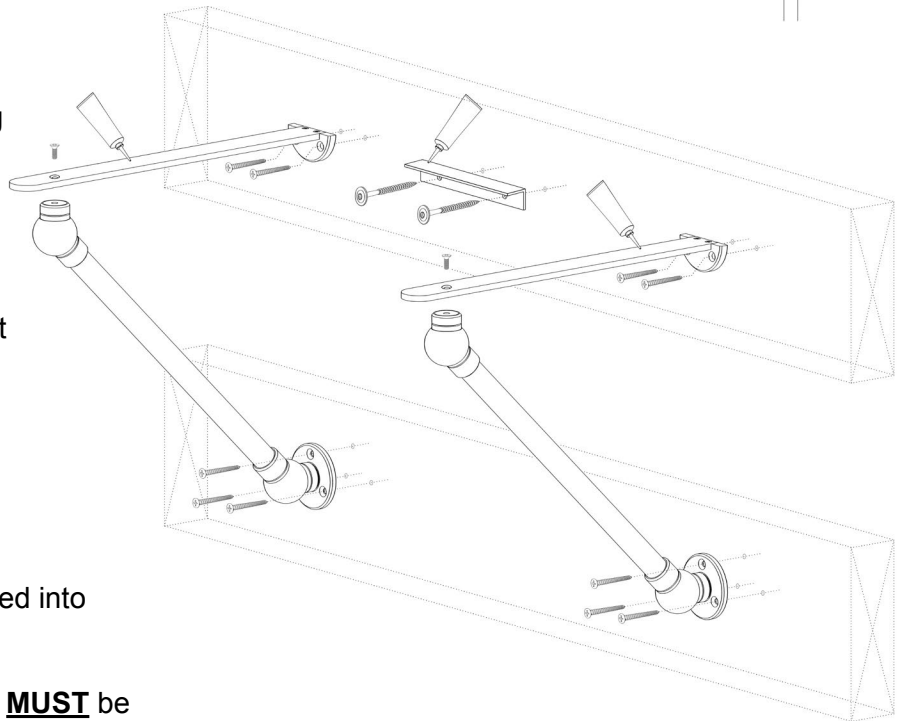
* Load bearing Wall Flanges (#7 & 9) and Wall Bracket (#5) **MUST** be screwed into framing or blocking (#6) in the wall

see: Wall Bracket Installation page

INSTALLATION INSTRUCTIONS



- Determine that you have received the correct product before unpacking and unwrapping the leg system components.
- The leg system components must be protected from abrasion and scratching during installation. Use padding on the floor to protect your console during layout and assembly.
- The Regency Wall Mount System **MUST** be securely screwed into solid wood blocking in the wall.
- The *Wall Flanges* **MUST** be secured into solid blocking
- The *Exposed Screw Wall Flanges* **MUST** be secured into solid blocking
- Confirm that the installation is correct and complete before permanently gluing the counter top into place.



SEE ADDITIONAL PAGES FOR INSTRUCTIONS SPECIFIC TO INCLUDED OPTIONS.

