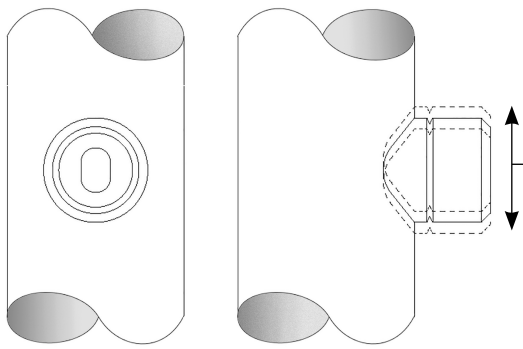
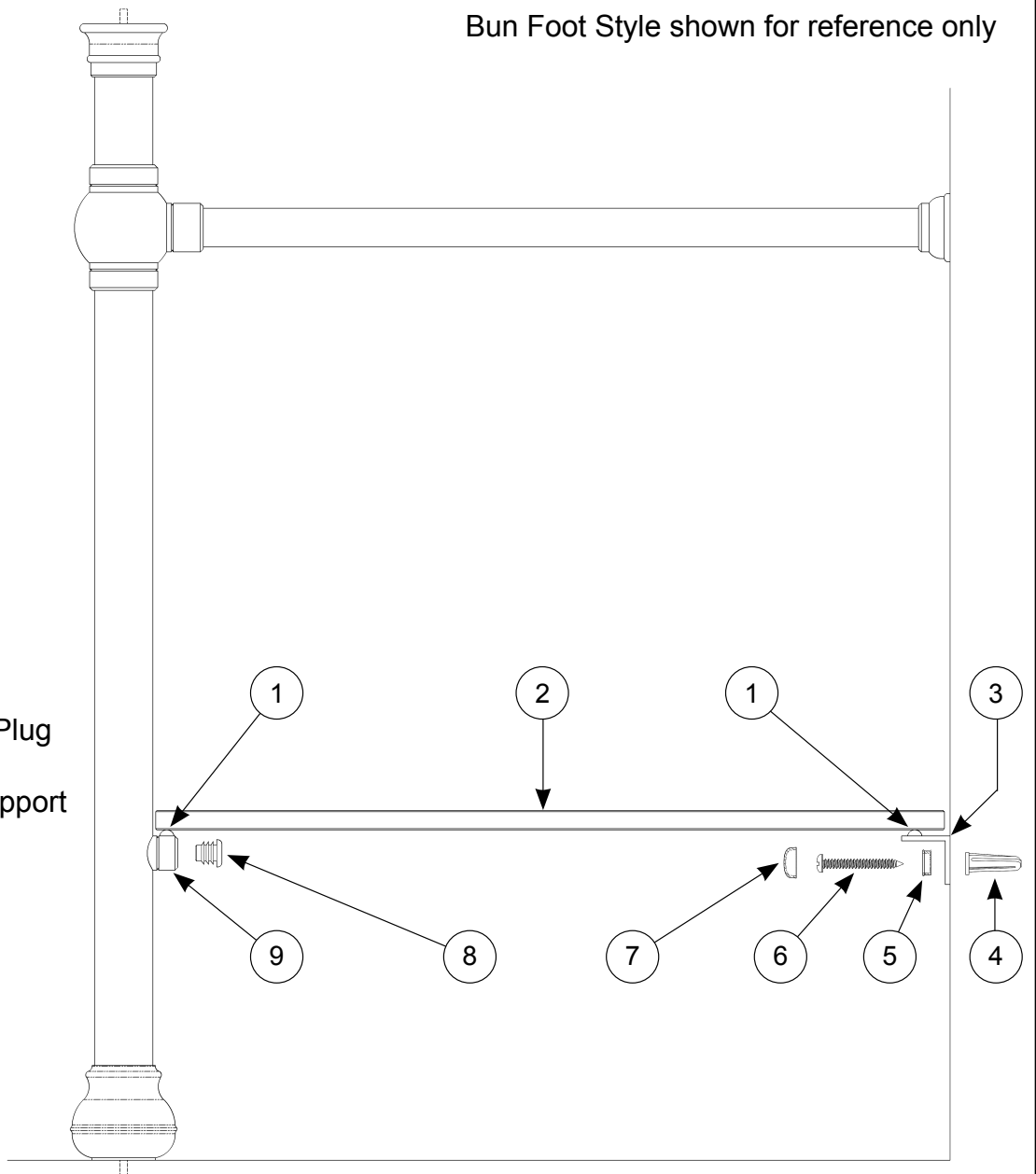


Glass Clip  
Shelf Supports

**SS2GC & SS3GC**

Bun Foot Style shown for reference only

1. Rubber Bumpers
2. Shelf
3. Matte Aluminum Wall Bracket
4. Wall Anchor
5. Screw Cover Base
6. Structural Screw
7. Screw Cover Cap
8. Black Plastic Filler Plug
9. Glass Clip Shelf Support



**Glass Clip Shelf Support Adjustment - If Necessary**

1. Loosen screw inside Glass Clip Socket (#9) 1/4 turn ONLY !  
CAUTION: over loosening screw will result in loss of nut !
2. Vertically adjust Socket as needed for shelf adjustment.
3. Re-tighten screw
4. Install Black Plastic Filler Plug (#8)